



KEY FEATURES

- ±2,160 SF Available
- Tenant Allowance Available
- ±48,000 Vehicles per Day (NC DOT 2015)
- Currently in Shell Condition
- Ample parking
- Easy access to Greensboro, Kernersville, and Winston-Salem
- New Construction in 2014

LEARN MORE ABOUT THIS PROPERTY

JORDAN REECE, CCIM

Jordan@commercialrealtync.com

336.689.7545

OFFICE | MEDICAL ON HIGHWAY 68

OFFICE FOR LEASE

OFFICE | MEDICAL ON HIGHWAY 68

2021 Eastchester Drive
High Point, NC 27265





2017 Eastchester
Office/Medical for Lease

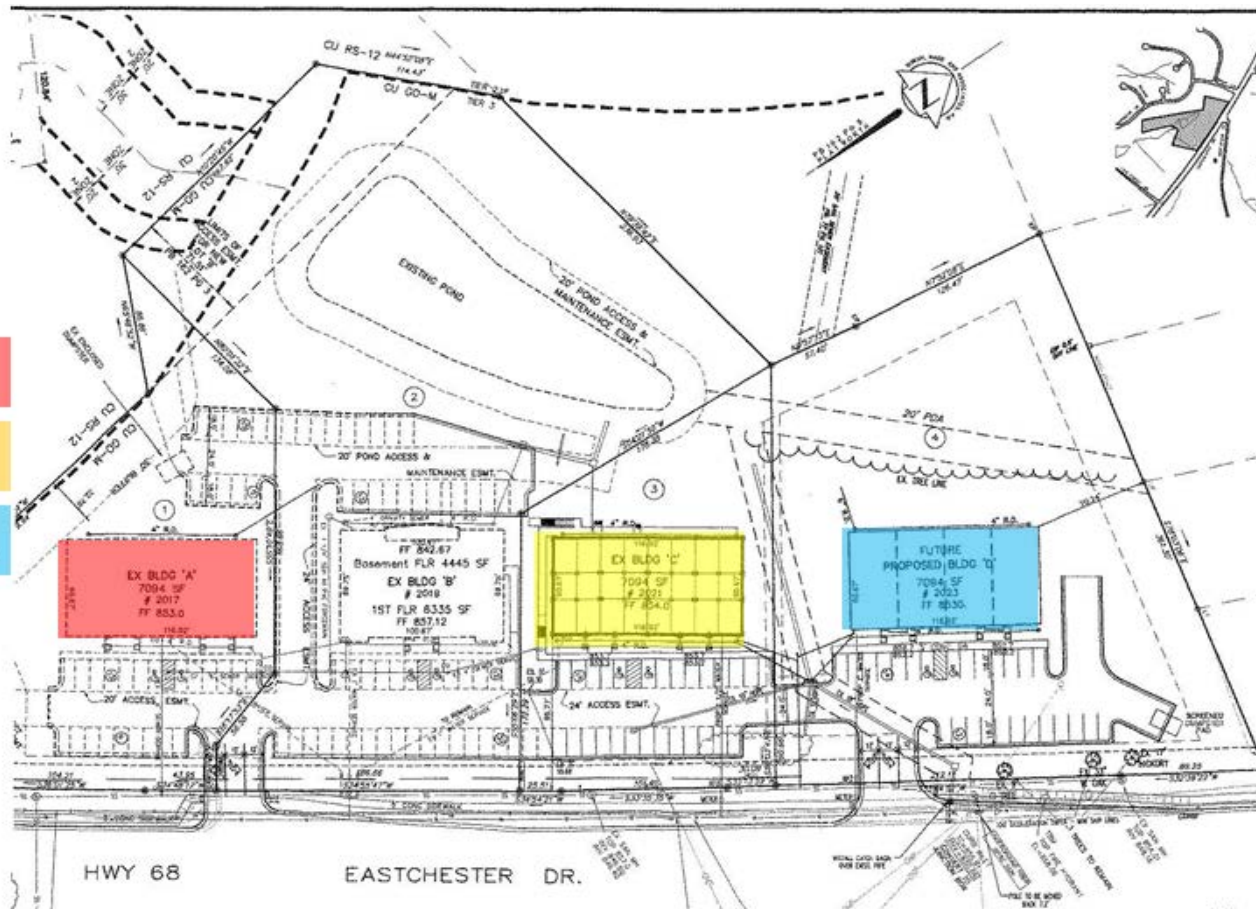
2021 Eastchester
Office/Medical for Lease

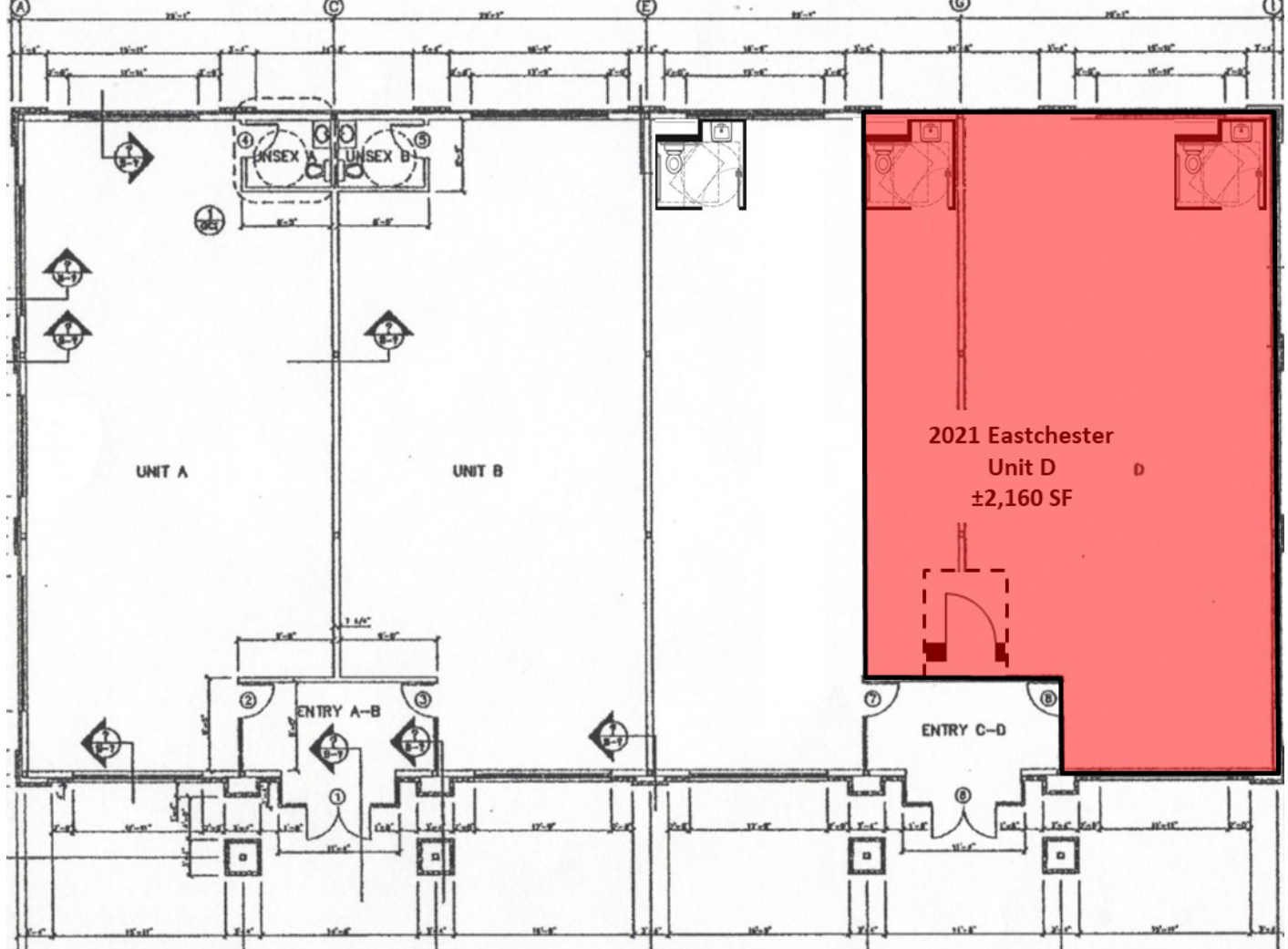
2023 Eastchester
BTS Opportunity

2017 Eastchester
Suite 105B - ±625 SF

2021 Eastchester
Unit D - ±2,160 SF

2023 Eastchester
Build to Suit - up to 9,000 SF





OFFICE | MEDICAL ON HIGHWAY 68

LOCATION

Address	2021 Eastchester Drive				
City	High Point	Zip	27265	County	Guilford

PROPERTY DETAILS

Property Type	Office/Medical	Building SF ±	7,200	Avail SF ±	2,160
Year Built ±	2014	Floors ±	1	Sprinklered	No
Electrical	City of HP	Sewer	City of HP	Heat	Yes
Water	City of HP	Air	Central	Zoning	CU GO-M

PRICING & TERMS

Lease Rt/SF±	\$21.00
Lease Type	NNN

Comments:	Prime location in high traffic central Triad location. Office Park currently includes several medical related tenants. Space is currently in shell condition to be developed to Tenant's specs.
-----------	---