



## KEY FEATURES

- ±7,078 RSF Available - Suite 105
- Business campus environment
- State of the art energy management system
- Beautiful landscaping, professionally maintained
- Less than 1 mile to I-40, Hanes Mall and Silas Creek Parkway

OFFICE

FOR LEASE | \$18.50 PSF FS

# CONSOLIDATED CENTER I

3330 Healy Drive  
Winston Salem, NC 27103

Consolidated Center is a professional office development conveniently located less than 1 mile from I-40, Hanes Mall & Silas Creek Parkway, and only 25 miles to Piedmont Triad International Airport. The property features a business campus environment, beautiful landscaping, and a common courtyard with ample seating surrounded by trees and shrubbery.

Consolidated Center I, 3330 Healy Drive, features a state of the art energy management system, newly renovated interior and exterior and access to fiber optics.

## LEARN MORE ABOUT THIS PROPERTY

### JEFF ANDREWS

Jeff@commercialrealtync.com

336.793.0890, ext 103

### STEVE VALLOS

Steve@commercialrealtync.com

336.793.0890, ext 105









## CONSOLIDATED CENTER I

### LOCATION

Address	3330 Healy Drive	City	Winston-Salem	State	NC
Zip	27103	County	Forsyth	Year Built	1983

### PROPERTY DETAILS

Property Type	Office / Medical Office	Building SF ±	37,451	Available SF ±	16,947
Floors	2	Elevator	Yes	Building Exterior	Brick/Glass

### UTILITIES

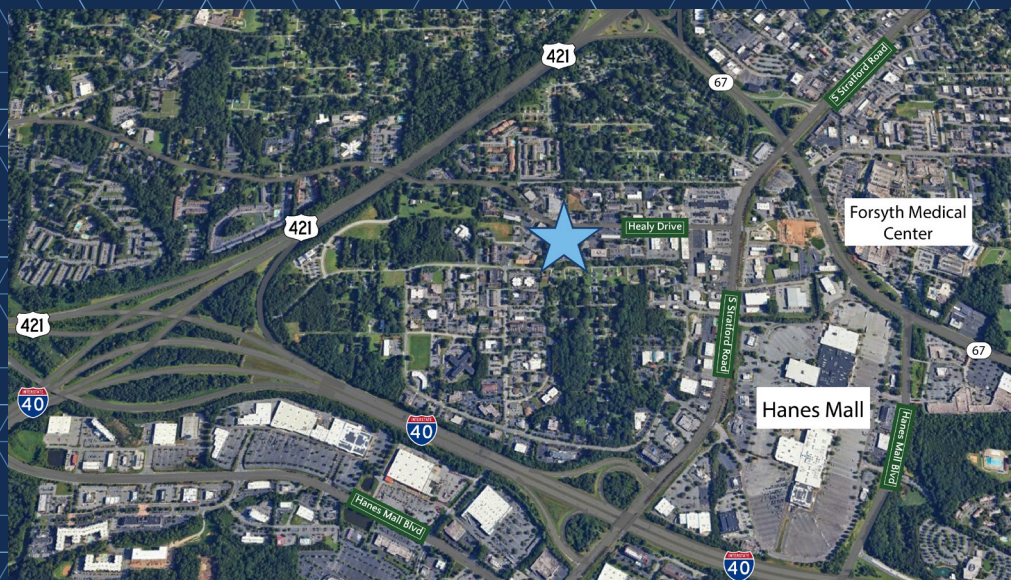
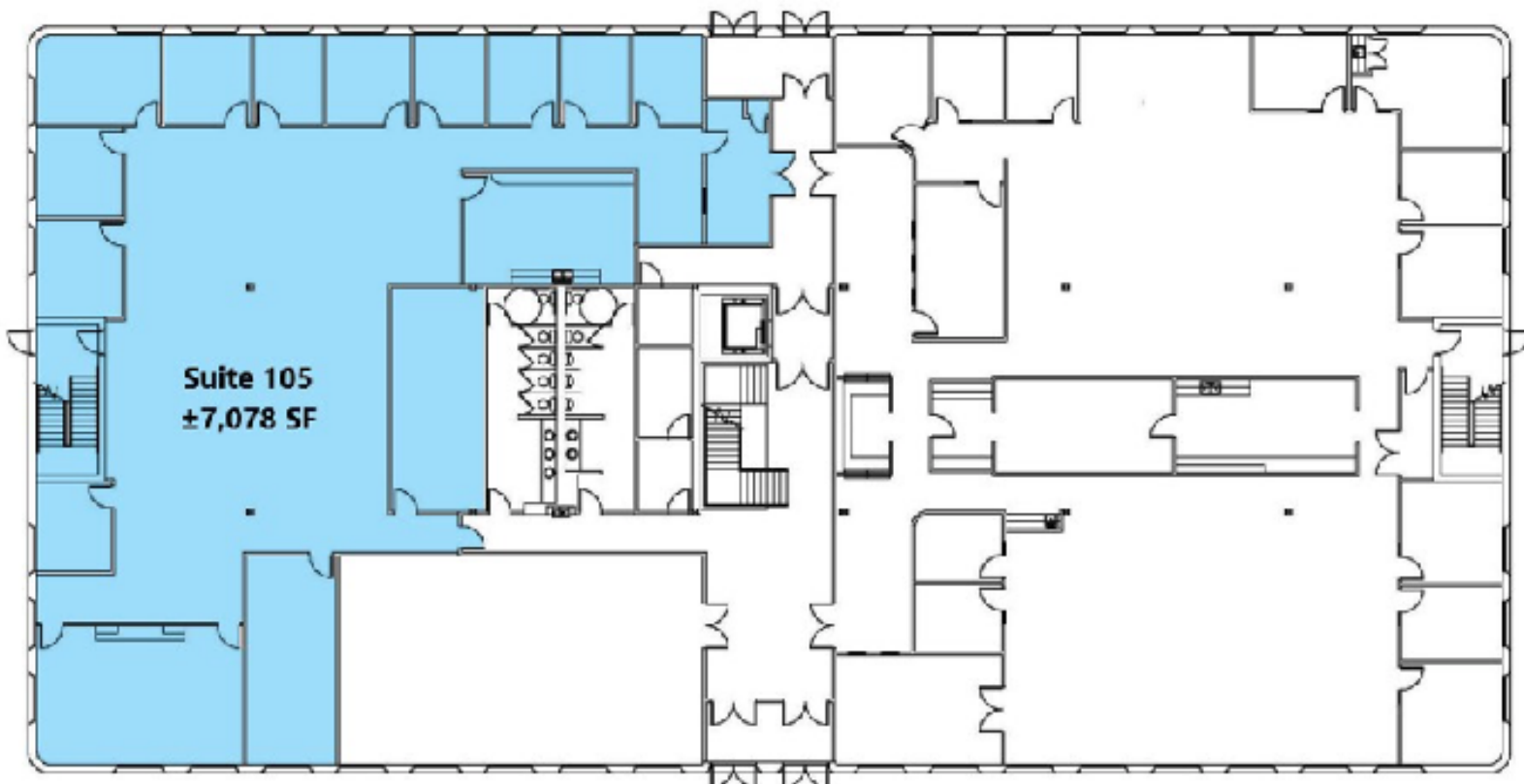
Electrical	Duke Energy	Sewer	City of Winston Salem	Heat	Yes
Water	City of Winston Salem	Air	Yes	Gas	





SUITE 105 - ±7,078 SF

FOR LEASE | \$18.50 PSF FS



## KEY FEATURES:

- 1 mile to Hanes Mall
- 1.2 miles to Forsyth Medical Center
- 1 mile to I-40