



KEY FEATURES

- ±617 - 11,098 RSF available
- Business campus environment
- State of the art energy management system
- Beautiful landscaping, professionally maintained
- Newly renovated interior & exterior
- Less than 1 mile to I-40, Hanes Mall and Silas Creek Parkway
- 25 miles to Piedmont Triad Internal Airport

±617 - 11,098 RSF AVAILABLE

OFFICE FOR LEASE

CONSOLIDATED CENTER IV

1399 Ashleybrook Lane, Winston Salem,
NC 27103

Consolidated Center is a professional office development conveniently located less than 1 mile from I-40, Hanes Mall & Silas Creek Parkway, and only 25 miles to Piedmont Triad International Airport. The property features a business campus environment, beautiful landscaping, and a common courtyard with ample seating surrounded by trees and shrubbery.

Consolidated Center IV, 1399 Ashleybrook Lane, features a state of the art energy management system, newly renovated interior and exterior as well as access to fiber optics.

LEARN MORE ABOUT THIS PROPERTY

JEFF ANDREWS

Jeff@commercialrealtync.com

336.793.0890, ext 103

STEVE VALLOS

Steve@commercialrealtync.com

336.793.0890, ext 105

KURT BIRKINS

Kurt@commercialrealtync.com

336.793.0890, ext 204



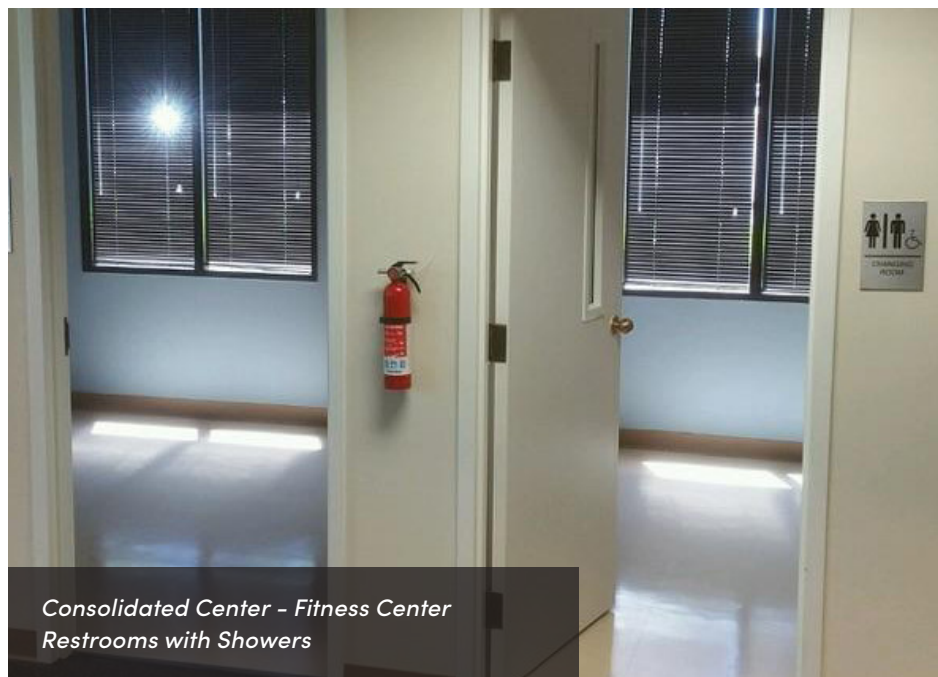
*Consolidated Center
Common Courtyard*



*Consolidated Center
Common Fitness Center*



*Consolidated Center III
Lobby*



*Consolidated Center - Fitness Center
Restrooms with Showers*



CONSOLIDATED CENTER III

LOCATION

Address	1399 Ashleybrook Lane	City	Winston-Salem	State	NC
Zip	27103	County	Forsyth	Year Built	1990

PROPERTY DETAILS

Property Type	Office / Medical Office	Building SF ±	27,587	Available SF ±	11,098
Floors	2	Elevator	Yes	Building Exterior	Brick/Glass

UTILITIES

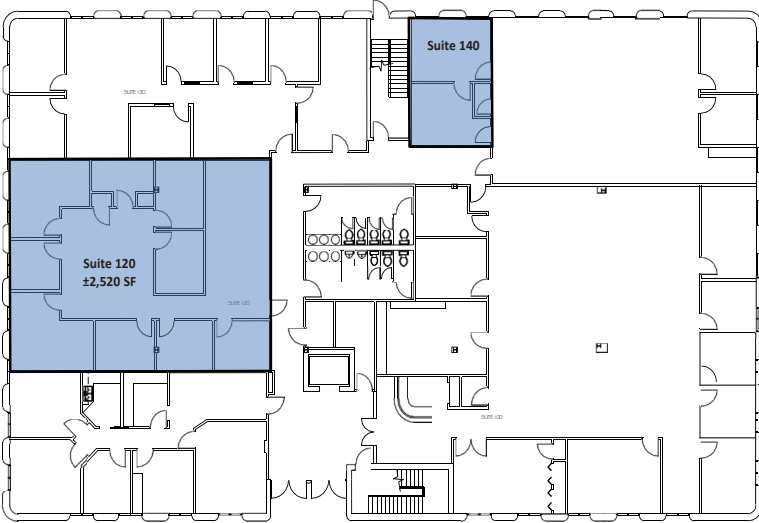
Electrical	Duke Energy	Sewer	City of Winston Salem	Heat	Yes
Water	City of Winston Salem	Air	Yes		



±617 - 11,098 RSF AVAILABLE

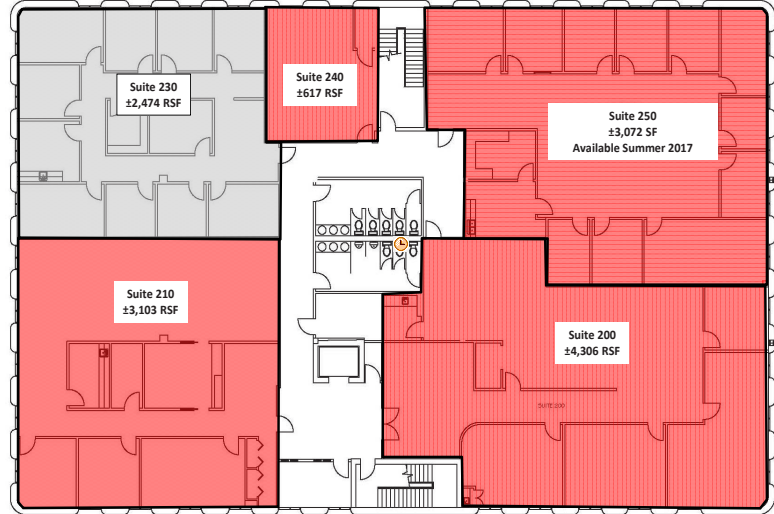
OFFICE FOR LEASE

FIRST FLOOR



Disclaimer: The above floor plans are not to scale. The available space shown is believed to be correct but is subject to change.

SECOND FLOOR



Disclaimer: The above floor plans are not to scale. The available space shown is believed to be correct but is subject to change.

AVAILABLE
13,572 sf

