



KEY FEATURES

- ±1,559 RSF – Suite 110
- ±2,005 RSF – Suite 130
- Ground Level Space
- Business campus environment
- State of the art energy management system
- Beautiful landscaping, professionally maintained
- Less than 1 mile to I-40, Hanes Mall and Silas Creek Parkway
- 25 miles to Piedmont Triad Internal Airport

±1,559 RSF OR ±2,005 RSF AVAILABLE

FOR LEASE | \$16.50 PSF SF

CONSOLIDATED CENTER IV

1399 Ashleybrook Lane, Winston Salem, NC
27103

Consolidated Center is a professional office development conveniently located less than 1 mile from I-40, Hanes Mall & Silas Creek Parkway, and only 25 miles to Piedmont Triad International Airport. The property features a business campus environment, beautiful landscaping, and a common courtyard with ample seating surrounded by trees and shrubbery.

Consolidated Center IV, 1399 Ashleybrook Lane, features a state of the art energy management system, newly renovated interior and exterior as well as access to fiber optics.

LEARN MORE ABOUT THIS PROPERTY

JEFF ANDREWS

Jeff@commercialrealtync.com

336.793.0890, ext 103

STEVE VALLOS

Steve@commercialrealtync.com

336.793.0890, ext 105



CONSOLIDATED CENTER IV

LOCATION

Address	1399 Ashleybrook Lane	City	Winston-Salem	State	NC
Zip	27103	County	Forsyth	Year Built	1990

PROPERTY DETAILS

Property Type	Office / Medical Office	Building SF ±	27,587	Available SF ±	11,098
Floors	2	Elevator	Yes	Building Exterior	Brick/Glass

UTILITIES

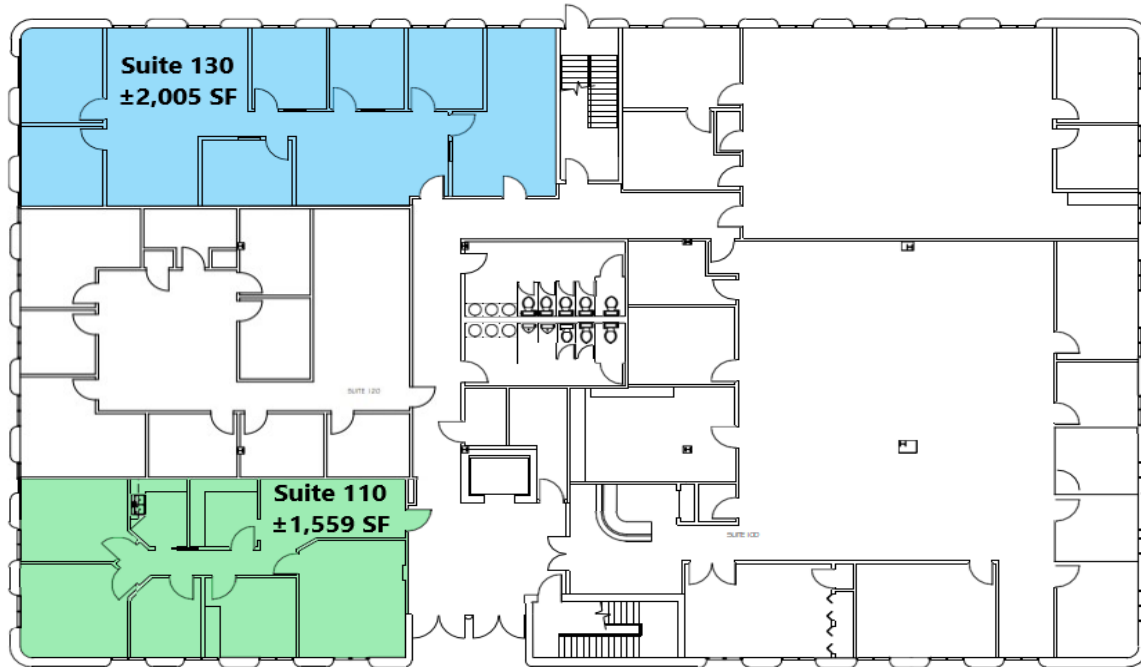
Electrical	Duke Energy	Sewer	City of Winston Salem	Heat	Yes
Water	City of Winston Salem	Air	Yes		



±1,559 RSF OR ±2,005 RSF AVAILABLE

FOR LEASE | \$16.50 PSF SF

Consolidated Center IV
1399 Asheleybrook Lane
Winston-Salem, NC 27103



Disclaimer: The above floor plans are not to scale.
The available space shown is believed to be correct but is subject to change.

