



## KEY FEATURES

- ±7,078 RSF Available – Suite 105
- Ground Level Space
- Business campus environment
- State of the art energy management system
- Beautiful landscaping, professionally maintained
- Less than 1 mile to I-40, Hanes Mall and Silas Creek Parkway
- 25 miles to Piedmont Triad Internal Airport

±7,078 SF AVAILABLE

FOR LEASE | \$16.50 PSF FS

# CONSOLIDATED CENTER I

3330 Healy Drive

Winston Salem, NC 27103

Consolidated Center is a professional office development conveniently located less than 1 mile from I-40, Hanes Mall & Silas Creek Parkway, and only 25 miles to Piedmont Triad International Airport. The property features a business campus environment, beautiful landscaping, and a common courtyard with ample seating surrounded by trees and shrubbery.

Consolidated Center I, 3330 Healy Drive, features a state of the art energy management system, newly renovated interior and exterior and access to fiber optics.

## LEARN MORE ABOUT THIS PROPERTY

### JEFF ANDREWS

Jeff@commercialrealtync.com

336.793.0890, ext 103

### STEVE VALLOS

Steve@commercialrealtync.com

336.793.0890, ext 105



## CONSOLIDATED CENTER I

### LOCATION

<b>Address</b>	3330 Healy Drive	<b>City</b>	Winston-Salem	<b>State</b>	NC
<b>Zip</b>	27103	<b>County</b>	Forsyth	<b>Year Built</b>	1983

### PROPERTY DETAILS

<b>Property Type</b>	Office / Medical Office	<b>Building SF ±</b>	37,451	<b>Available SF ±</b>	7,078
<b>Floors</b>	2	<b>Elevator</b>	Yes	<b>Building Exterior</b>	Brick/Glass

### UTILITIES

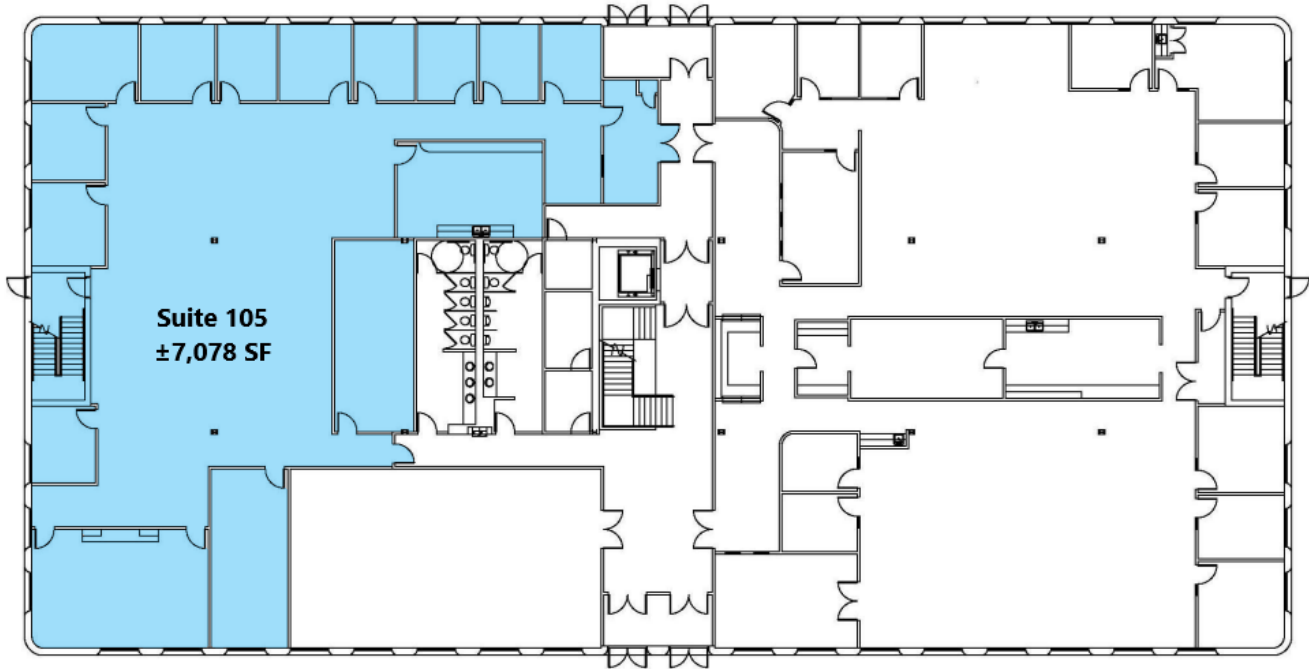
<b>Electrical</b>	Duke Energy	<b>Sewer</b>	City of Winston Salem	<b>Heat</b>	Yes
<b>Water</b>	City of Winston Salem	<b>Air</b>	Yes	<b>Gas</b>	



±7,078 SF AVAILABLE

FOR LEASE | \$16.50 PSF FS

**Consolidated Center I**  
3330 Healy Drive  
Winston-Salem, NC 27103



Disclaimer: The above floor plans are not to scale.  
The available space shown is believed to be correct but is subject to change.

