



KEY FEATURES

- ±28.62 Acre Development Site adjacent to Piedmont Centre
- 12 Minutes Away From Piedmont Triad International Airport
- 5 Minutes Away from I-40, I-73 and I-74
- Level Topography and Partially Cleared; Water and Sewer On Site
- 640' of Eastchester Road Frontage
- Great Location for Retail, Hotel, Health Care or Distribution Function
- 32,000 VPD (Source: NC DOT)

**PRIME DEVELOPMENT SITE ADJACENT TO
PIEDMONT CENTRE**

FOR SALE

2831-2835 EASTCHESTER DR.

High Point, NC 27265

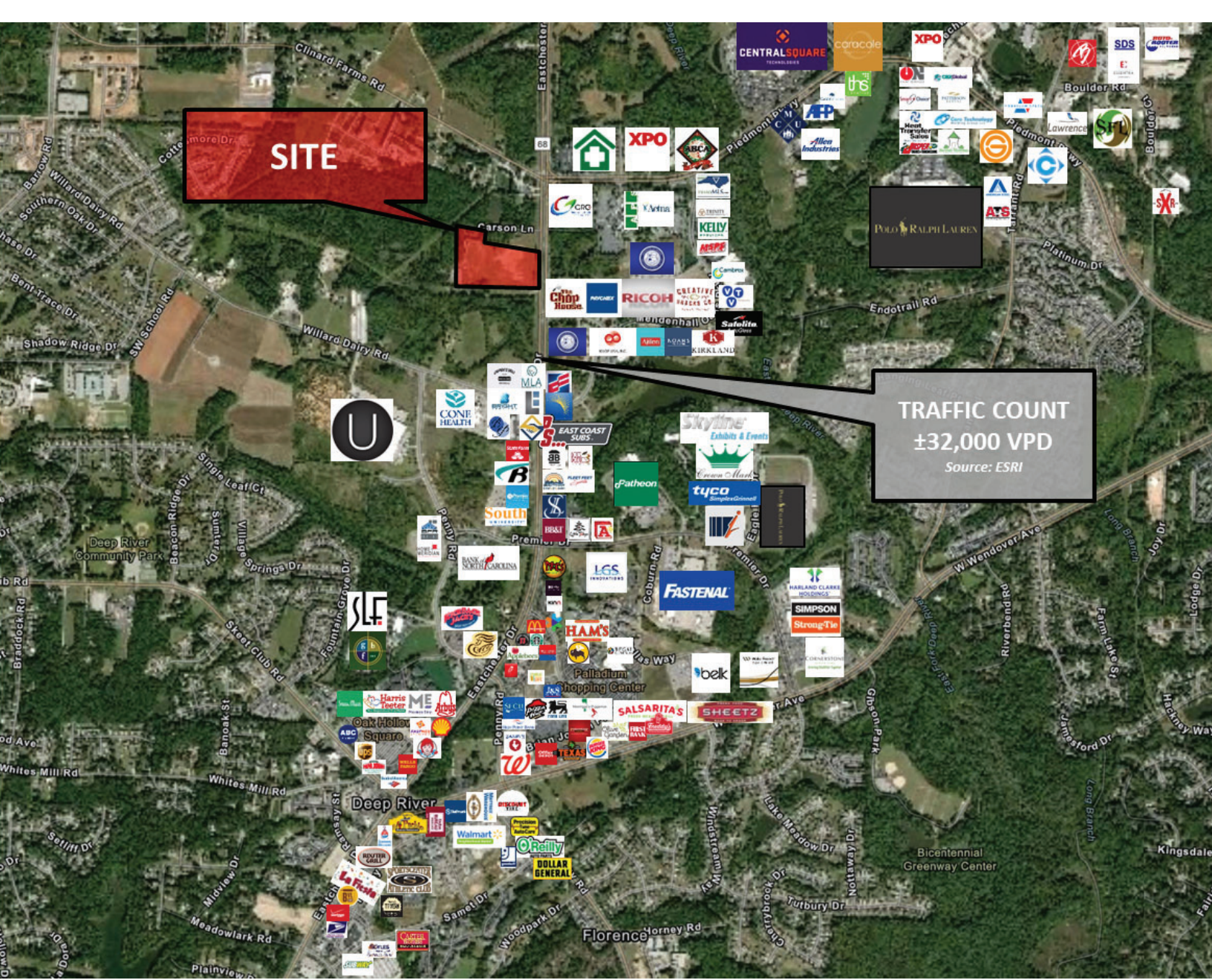
2831-2835 Eastchester Drive is a prime development site adjacent to Piedmont Centre with high visibility and excellent topography. Located just minutes from Piedmont Triad International Airport, and major freeways, this site offers a great location for Retail, Hotel, Health Care, or Distribution. The property currently has both water and sewer on site and is partially cleared with access to Eastchester Drive.

LEARN MORE ABOUT THIS PROPERTY

JORDAN REECE, CCIM

jordan@commercialrealtync.com

336.689.7545



PRIME DEVELOPMENT SITE ADJACENT TO PIEDMONT CENTRE

PROPERTY DETAILS

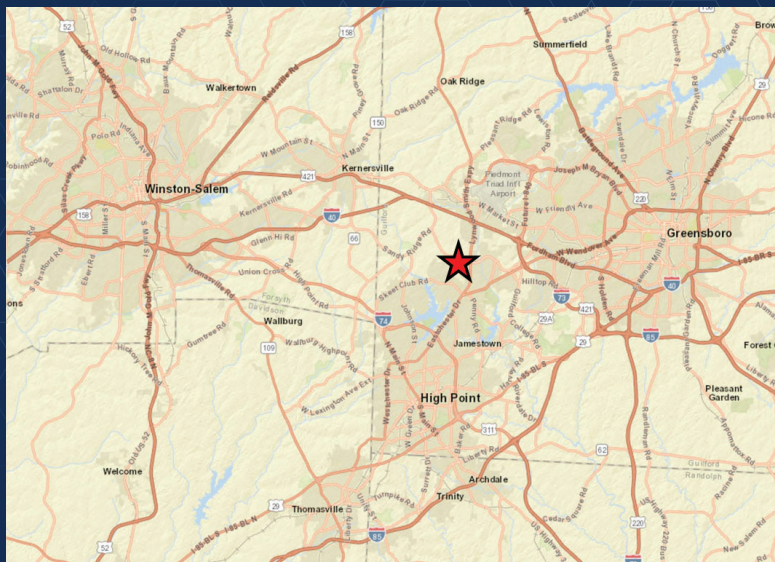
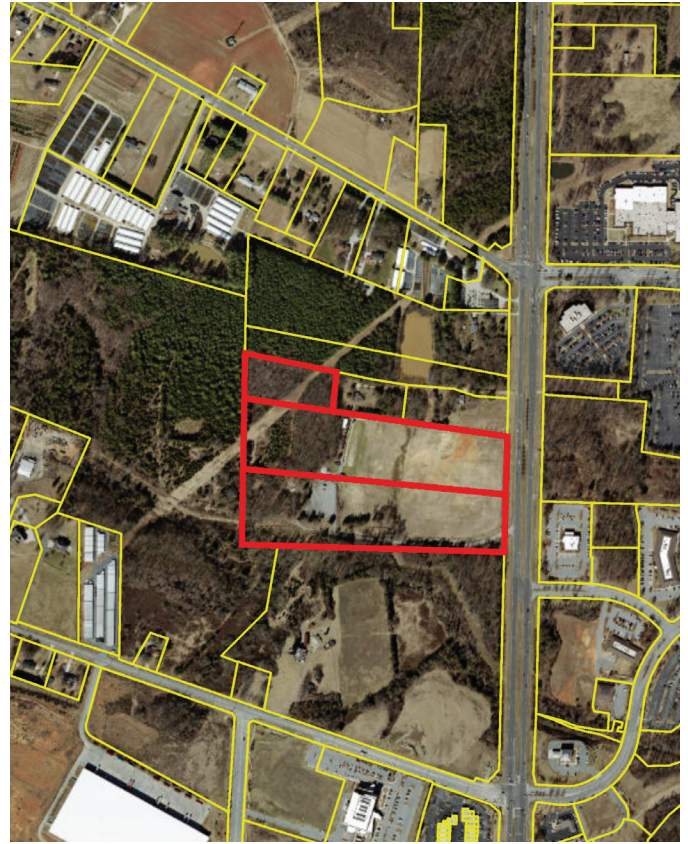
Address	2831-2835 Eastchester Dr.	City	High Point	Zip	27265
County	Guilford	Property Type	Land	Acres	±28.62
Zoning	AG	Utilities	City of High Point	Gas	PNG

PRICING & TERMS

Price	\$4,722,300	Price Per Acre	\$165,000	
-------	-------------	----------------	-----------	--

COMMENTS

Highly visible with excellent topography. City of High Point Land Use Plan Projects CA-LI Zoning.



LOCATION FEATURES

- 12 Minutes Away From Piedmont Triad International Airport
- 5 Minutes Away from I-40, I-73 and I-74
- Access to Eastchester Drive
- Great Location for Retail, Hotel, Health Care or Distribution Function
- 32,000 VPD (Source: NC DOT)