



KEY FEATURES

- Class A Medical Office Space Located in Kimel Park
- Formerly Occupied By Novant Health
- Efficient Floor Plan Suitable For Many Practice Groups
- Lease Rt/SF: \$18.00
- Contact Broker for Sale Price

CLASS A MEDICAL OFFICE SPACE

FOR SALE OR LEASE

185 KIMEL PARK DRIVE

Winston Salem, NC 27103

LEARN MORE ABOUT THIS PROPERTY

STEVE VALLOS

Steve@commercialrealtync.com

336.793.0890, ext 105

KURT BIRKINS

Kurt@commercialrealtync.com

336.793.0890, ext 204





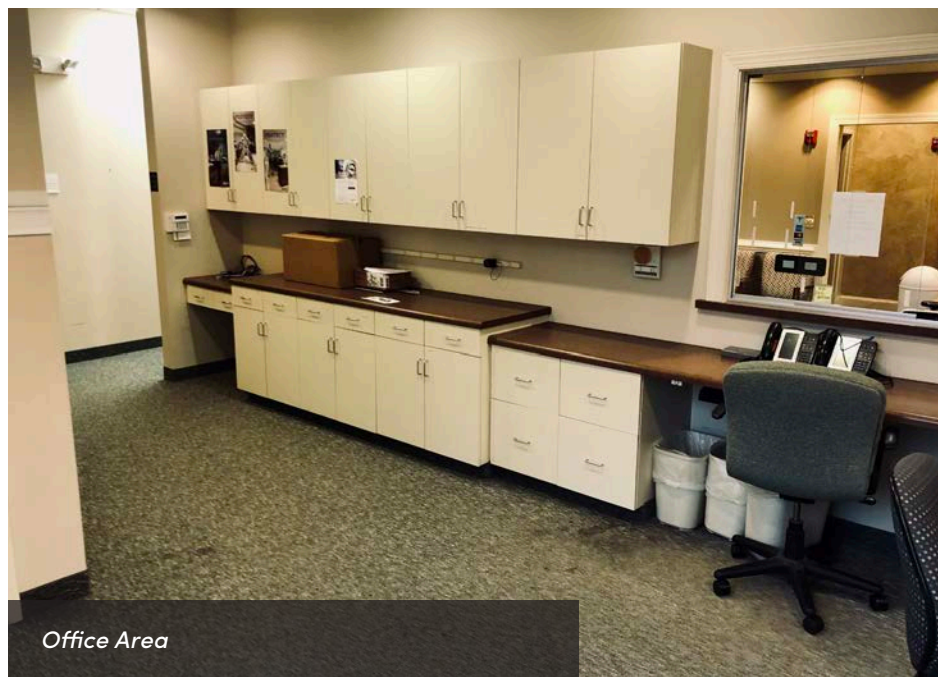
Building Entrance



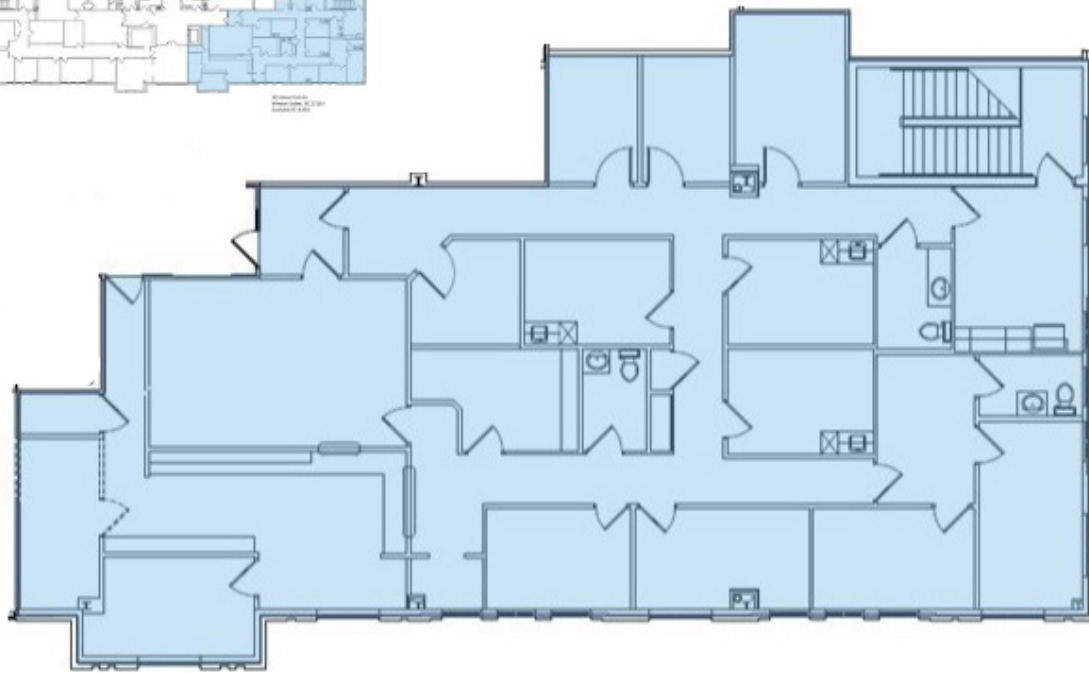
Exam Room



Reception Area



Office Area



185 Kimel Park Dr.
Winston Salem, NC 27103
Available SF: 4,383

CLASS A MEDICAL OFFICE SPACE - KIMEL PARK

LOCATION

Address	185 Kimel Park Dr.	City	Winston Salem		
State	NC	Zip	27103	County	Forsyth

PROPERTY DETAILS

Property Type	Medical Office	Elevator	1	Year Built	
Available SF	4,383	Floors	2	Zoning	

UTILITIES

Electrical	Duke	Sewer	City	Water	City
Gas	Piedmont Natural				

TAX INFORMATION

Tax PIN	614-52-3134	Tax Map	612842		
----------------	-------------	----------------	--------	--	--

PRICING

Lease Rt/SF	\$18.00	Lease Type	NNN	Sale Price	Contact Broker
--------------------	---------	-------------------	-----	-------------------	----------------