



KEY FEATURES

- ±960 SF
- 2 Offices Plus Reception Area
- Flexible Work Areas
- Beautifully Appointed
- Additional Storage Space
- Located in Popular Heart of Uptown High Point
- Lease Rt/SF: \$16 MG

OFFICE SUITE

MODIFIED GROSS LEASE

EMERYWOOD CENTRE OFFICE PARK - SUITE 104

211 W. Lexington Ave., Suite 104
High Point, NC, 27262

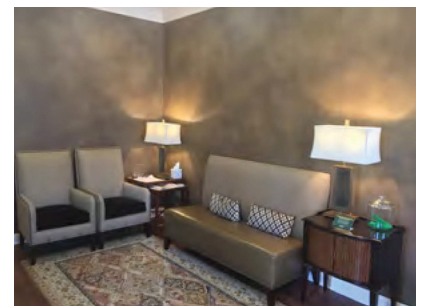
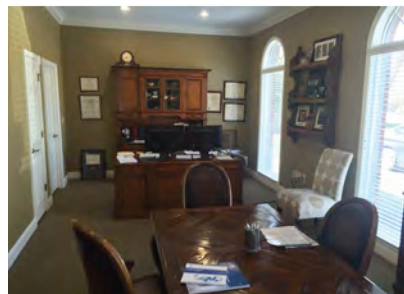
Well appointed office suite located in popular heart of uptown High Point! Suite includes two separate offices, reception area, flexible work areas, and additional storage space.

LEARN MORE ABOUT THIS PROPERTY

JORDAN REECE, CCIM

Jordan@commercialrealtync.com

336.689.7545 (cell)





EMERYWOOD CENTRE OFFICE PARK - SUITE 104

LOCATION | 211 W. LEXINGTON AVENUE, SUITE 104

City	High Point	Zip	27262	County	Guilford
-------------	------------	------------	-------	---------------	----------

PROPERTY DETAILS

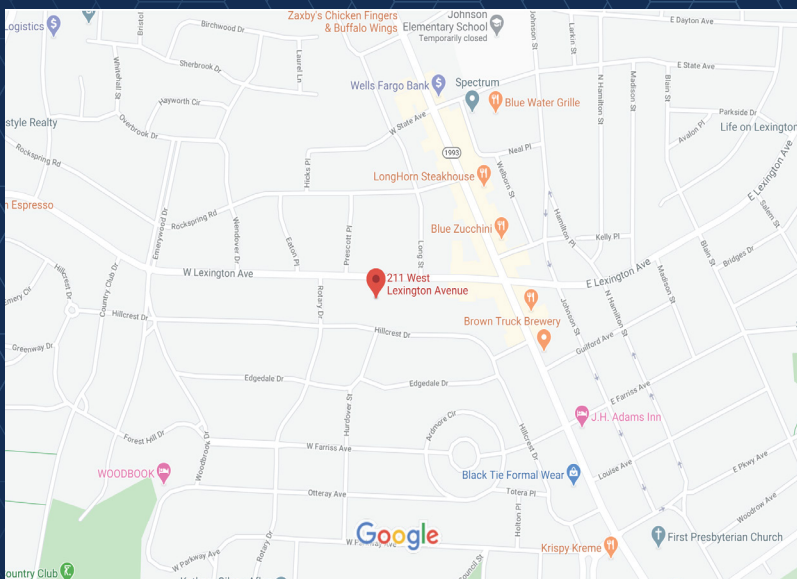
Property Type	Office	Available SF ±	960	Building SF	8,760
Year Built	1987	Flooring	Carpet/Tile	Bldg Exterior	Brick
Roof	Shingle	Floors	1		

UTILITIES

Electrical	At Site	Sewer	At Site	Water	At Site
Air	Central	Heat	Heat Pump		

PRICING AND TERMS

Lease Rt/SF ±	\$16.00	Lease Type	Modified Gross
----------------------	---------	-------------------	----------------



LOCATION FEATURES

- Located in the desirable heart of uptown High Point
- Situated between N. Main Street and Westchester Drive