

±4.77 Acres

KEY FEATURES

- Located in Winston-Salem's strongest demographic area
- 3,344 households within a 1 mile radius from the site
- Robinhood Road AADT 20,000 / Peace Haven Road AADT 15,000 (over 35,000 AADT combined)
- \$85,546 median household income in a 1 mile radius from the site
- Strong retail presence near the site, less than 0.3 miles from Whitaker Square Shopping Center and Sherwood Plaza Shopping Center
- 0.7 miles from Silas Creek Parkway, 2.5 miles from 421/Salem Parkway
- Zoned Highway Business (HB)

±4.77 ACRE DEVELOPMENT SITE

FOR SALE

PRIME MULTIFAMILY DEVELOPMENT SITE

3443-3447 Robinhood Road,
Winston-Salem, NC 27106

This ±4.77 acre development site features excellent access to some of Winston-Salem's most densely traveled thoroughfares (Robinhood Rd. and Peace Haven Rd.) and is located in Winston-Salem's premier demographic area. This site is zoned HB (Highway Business) and can support up to 200 multifamily units. This pedestrian-friendly site is located in close proximity to multiple restaurants and retailers, and provides nearby access to Silas Creek Parkway (Hwy-67). Contact brokers for pricing information.

LEARN MORE ABOUT THIS PROPERTY

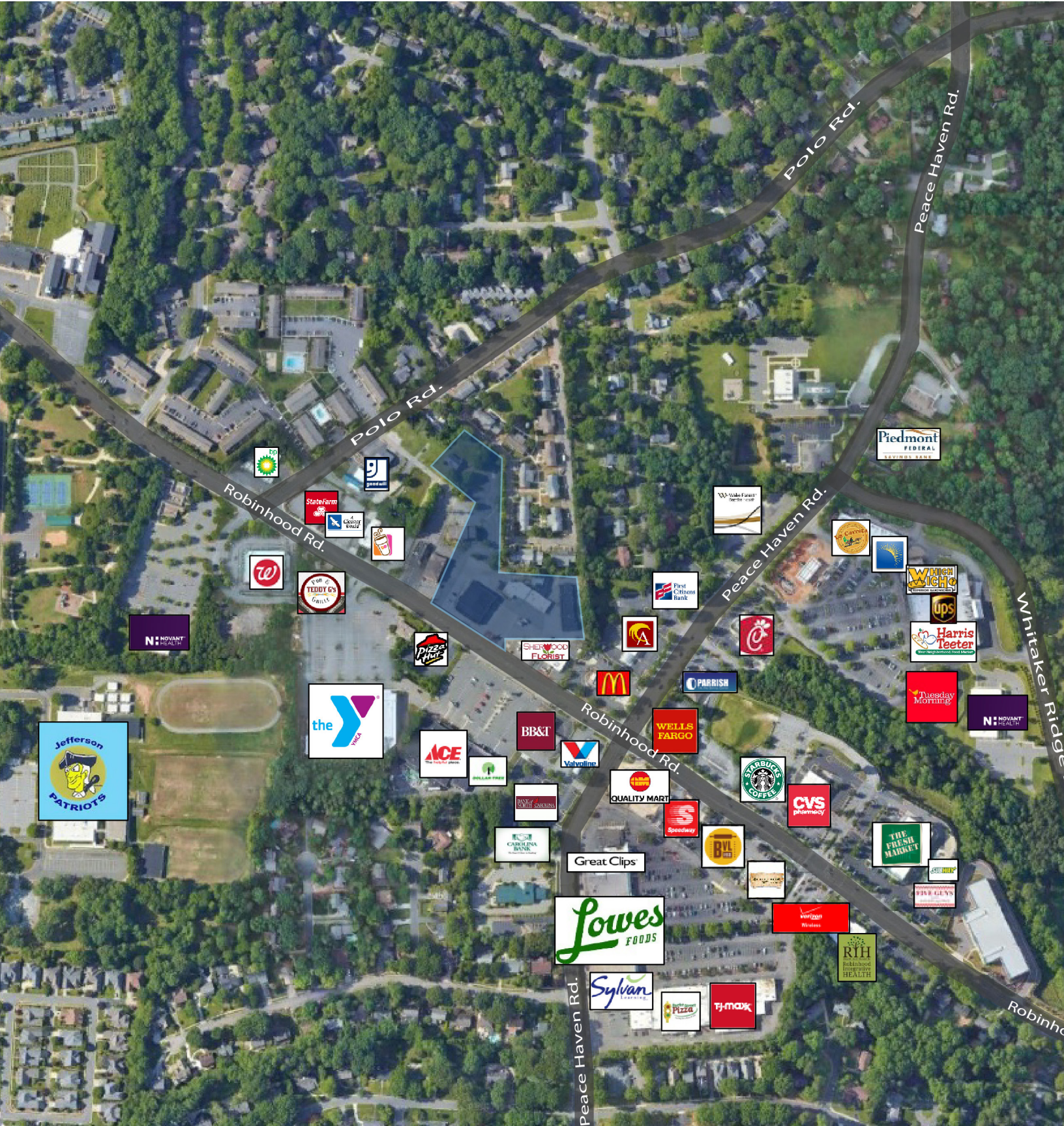
JOHN REECE, II
John@commercialrealtync.com
555.793.0890, ext 101

HOUSTON HOUGH
Houston@commercialrealtync.com
555.416.8520 (cell)

Demographics (ESRI)			
	1 Mile	2 Miles	3 Miles
2020 Population	7,608	21,420	56,925
2020 Households	3,344	9,344	23,845
2020 Median HH Income	\$85,546	\$92,262	\$64,462

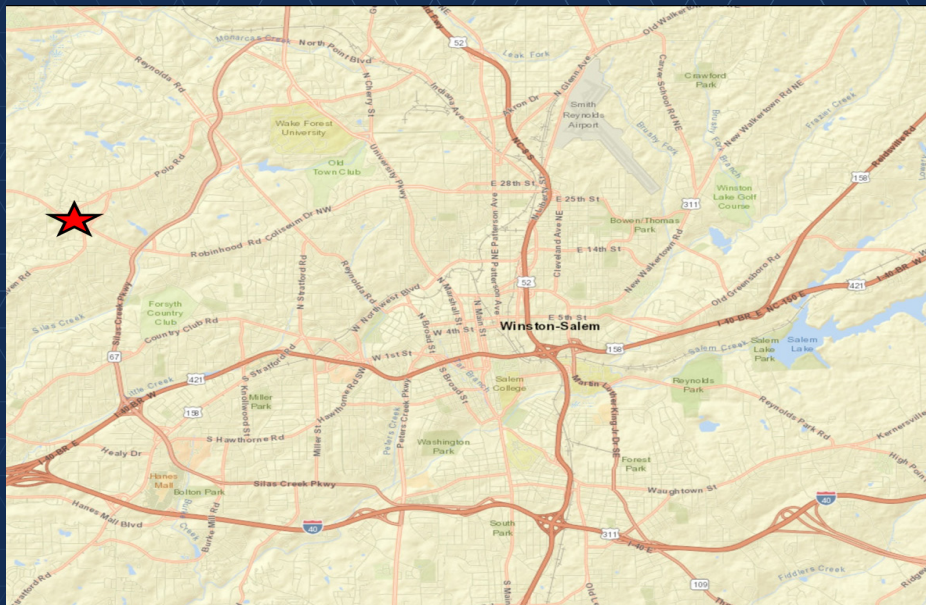
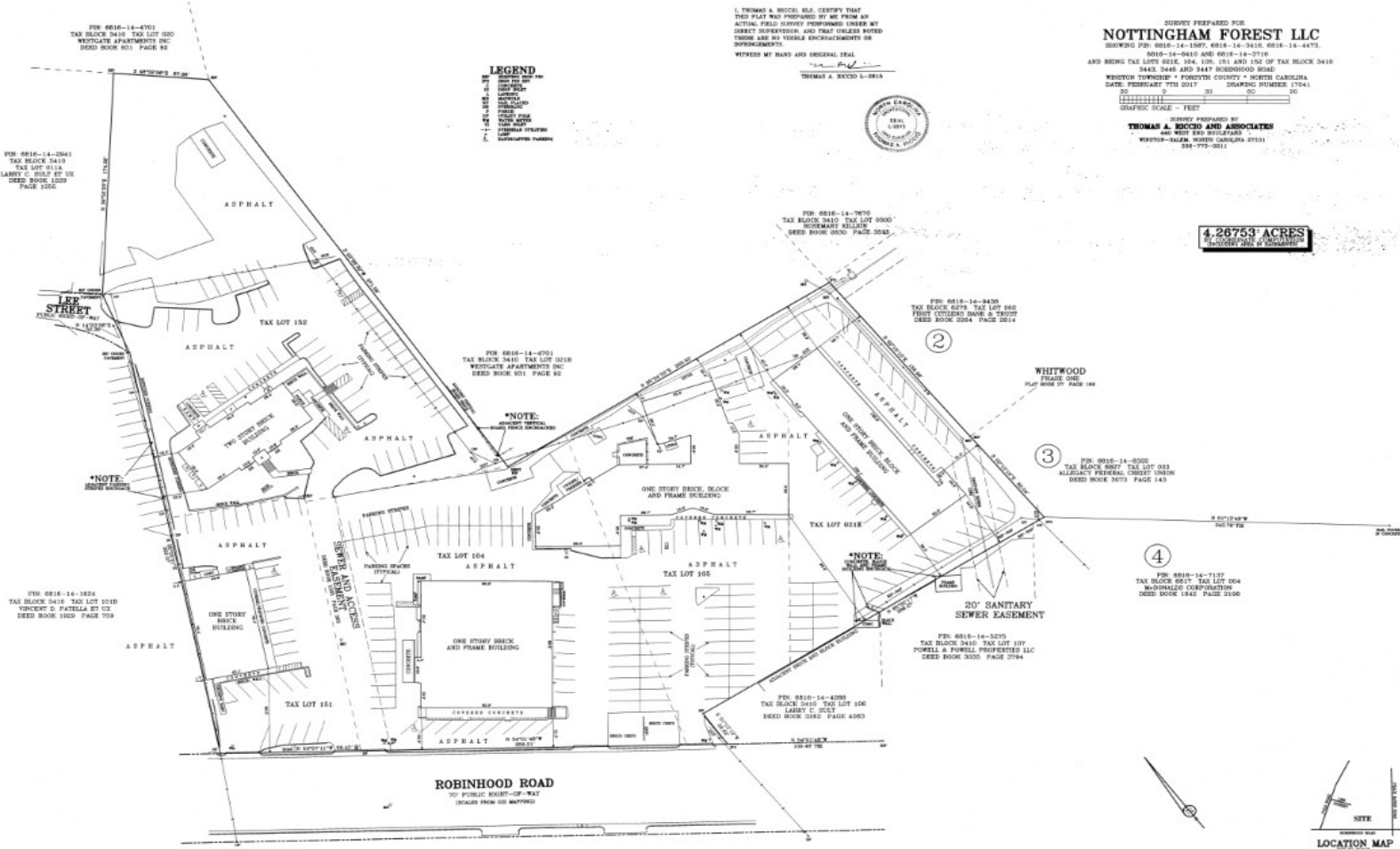
±4.77 ACRE DEVELOPMENT SITE

FOR SALE



±4.77 ACRE DEVELOPMENT SITE

FOR SALE



LOCATION FEATURES

- Excellent location on Robinhood Road between Peace Haven and Polo Roads
- Proximity to many restaurants, retail, and Silas Creek Parkway
- Very high traffic counts: ±20,000 AADT (Robinhood Road) and ±15,000 AADT (Peace Haven Road)