



# The Prizery

OFFICE / RESEARCH SPACE FOR LEASE



**INTERSECT EAST**

A PACESETTER INNOVATION HUB

FLOORS

1

TOTAL SF

72,000

YEAR BUILT

1914

PROPERTY TYPE

Class A

[INTERSECTEAST.COM](https://www.intersecteast.com)

FOR MORE INFO

**301 W 10th Street, Greenville, NC 27834**



**Pacesetter**

INNOVATION HUB

The Prizery is part of Phase 1 of Intersect East, a project centered to foster the dynamic interplay of business, academia, and downtown living, in Greenville, NC. The site bridges East Carolina University and the bustling Dickinson Avenue Arts District. The one-story building will have 72,000 SF of Class A office and mixed-use space. Just outside The Prizery is on-site dining options and a green space that foster real community, innovation, and promotes innovation exchange. What other office space boasts a food train cafe?

When you have big dreams and aggressive goals, it's great to have a university next door. ECU can combine its research brainpower & resources with yours, and exciting things happen. Take advantage of the University's R&D resources and talent, combine it with other neighbor Pacesetter champions, and you have a formula for growth with efficiency. Don't miss this opportunity to be a Pacesetter and join us in building a community filled with entrepreneurship, collaboration, and game-changing work!

## For More Information Contact:

**Jordan Reece, CCIM**

Jordan@commercialrealtync.com  
336.698.7545

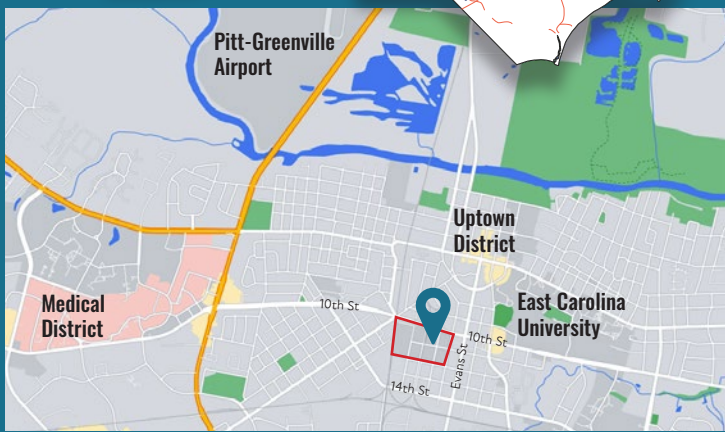
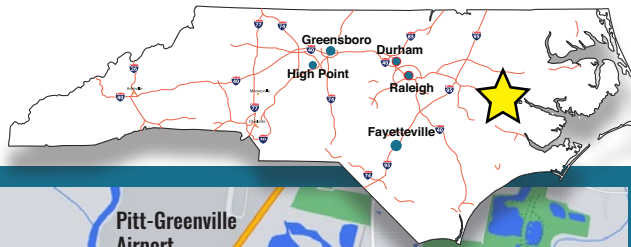
**Jeff Andrews, SIOR**

Jeff@commercialrealtync.com  
336.793.0890



Real Estate Services & Investments

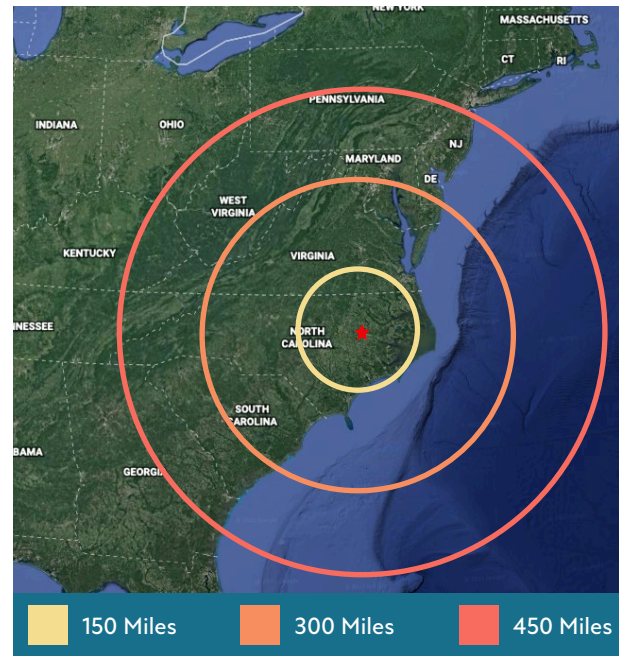




## GREENVILLE, NC

The Prizery is adjacent to East Carolina University and less than 10 minutes from Pitt-Greenville airport. The Medical District, which houses a level-1 trauma center Vidant Health, is 5 minutes to the west.

The Tar River and Dickinson Avenue are two of many areas in Greenville to enjoy activities such as kayaking, shops, and dining.

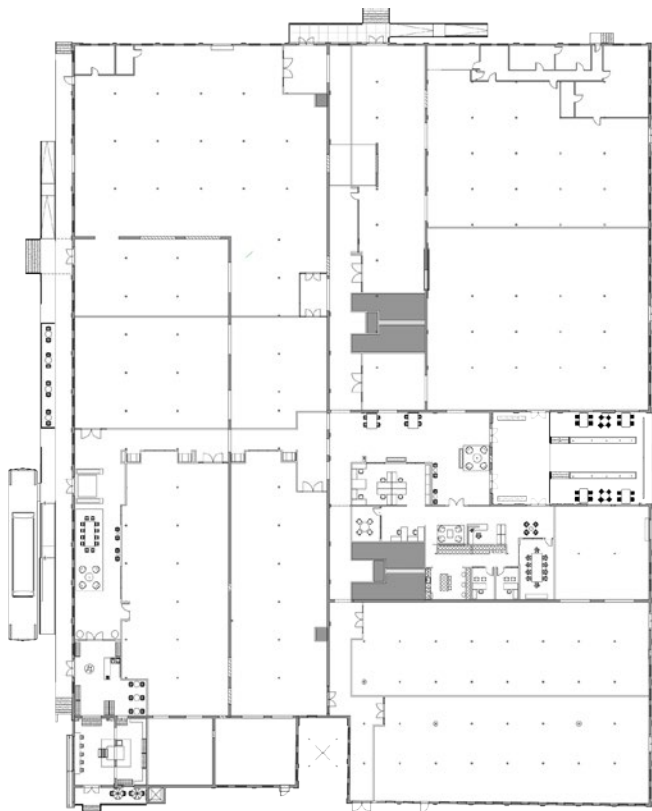


**Master Developed By:**

**Elliott Sidewalk Communities**  
[info@elliottsidewalk.com](mailto:info@elliottsidewalk.com)  
 443.391.8420







**301 W 10th Street, Greenville, NC 27834**

**Zoning:** MUI (Mixed-Use Institutional)

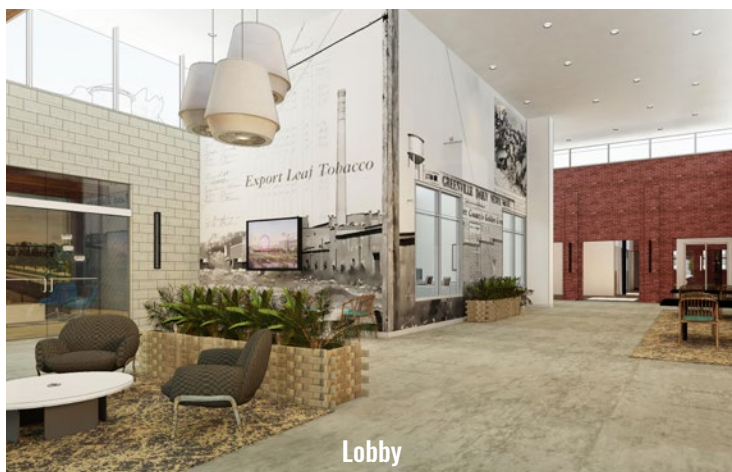
**Ceiling Height:** 16' - 6'

**Electrical:** TBD

**Gas:** Available

**Dock(s):** Yes, location TBD

**Sprinkler:** Yes





**Pacesetter**  
INNOVATION HUB

## Access to Olympic-caliber innovation for champion businesses

A Pacesetter is defined as a person or organization that takes the lead and sets the standards of achievement for others. Imagine a community filled with Pacesetters all looking to change the game. Intersect East provides an Olympic-caliber training facility for innovative businesses complete with the resources to help you WIN.

A hub of innovation, Intersect East welcomes Pacesetters to join us in building a community filled with entrepreneurship, collaboration, and game-changing work. Whether a company in early stages of growth or one looking to take things to the next level this campus includes innovation, collaboration, and a center built on helping you succeed. Whether you are a Pacesetter working in technology, science, or a manufacturing business you can find a home here at Intersect East.

## A university campus as your next-door neighbor

When you have big dreams and aggressive goals, it's great to have a university next door. Combine its research brainpower & resources with yours, and exciting things happen. Take advantage of the university's R&D resources and talent, combine it with other neighbor Pacesetter champions, and you have a formula for growth with efficiency!

Proximity to the university offers top talent to help grow and attract your next generation of Pacesetters.

The innovation and growth that will be unleashed at Intersect East is the direct result of the remarkable vision and commitment of East Carolina University. In addition to its mission of providing outstanding higher education, ECU sees another of its most important roles as being a vital community partner and a force for helping raise the quality of life for the entire eastern region of North Carolina.

ECU is partnering with Elliott Sidewalk Communities to expand collaborative research, health sciences, and grow champion businesses for community development in Greenville and the east region of North Carolina. Their partnership seeks to produce and expand innovation, address local and regional workforce development and let this project vision be a magnet to attract talent and investment.



## An environment built for growth

This place is a remarkable growth engine for champion companies. Great businesses locate here to become even greater. To accelerate change, to press your advantages, to put more distance between yourselves and your competitors, to grab the future with both hands, Intersect East helps you push the boundaries of success.