



KEY FEATURES

- ±2,109 SF Medical Office Condo
- \$17.50 PSF NNN Rental Rate
- Strategically located in Highland Oaks Medical Park
- Convenient access to Exit 190 of I-40
- Zoning: GB-S

MEDICAL OFFICE CONDO

FOR LEASE | NNN

HIGHLAND OAKS MEDICAL CONDO

725 Highland Oaks Drive, Suite 106
Winston Salem, NC 27103

Located in the highly desirable Highland Oaks Medical Park, this property offers convenient access to I-40 (101,000 VPD) and Hanes Mall Blvd. (23,500 VPD). Featuring several offices, break room/kitchen, and a reception/waiting area, this space could facilitate a multitude of medical office uses.

LEARN MORE ABOUT THIS PROPERTY

JEFF ANDREWS, SIOR

Jeff@CommercialRealtyNC.com

336.793.0890, ext 103





HIGHLAND OAKS MEDICAL CONDO

LOCATION

Address	725 Highland Oaks Drive, Suite 106		
City	Winston-Salem	Zip	27103
		County	Forsyth

PROPERTY DETAILS

Property Type	Medical Office Condo	Year Built	1997
Available SF ±	2,109	Building Exterior	Brick Masonry

UTILITIES

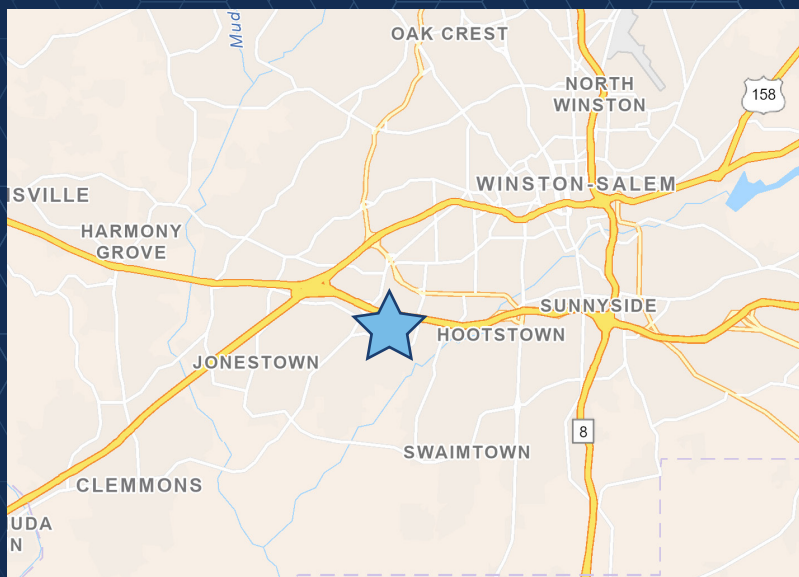
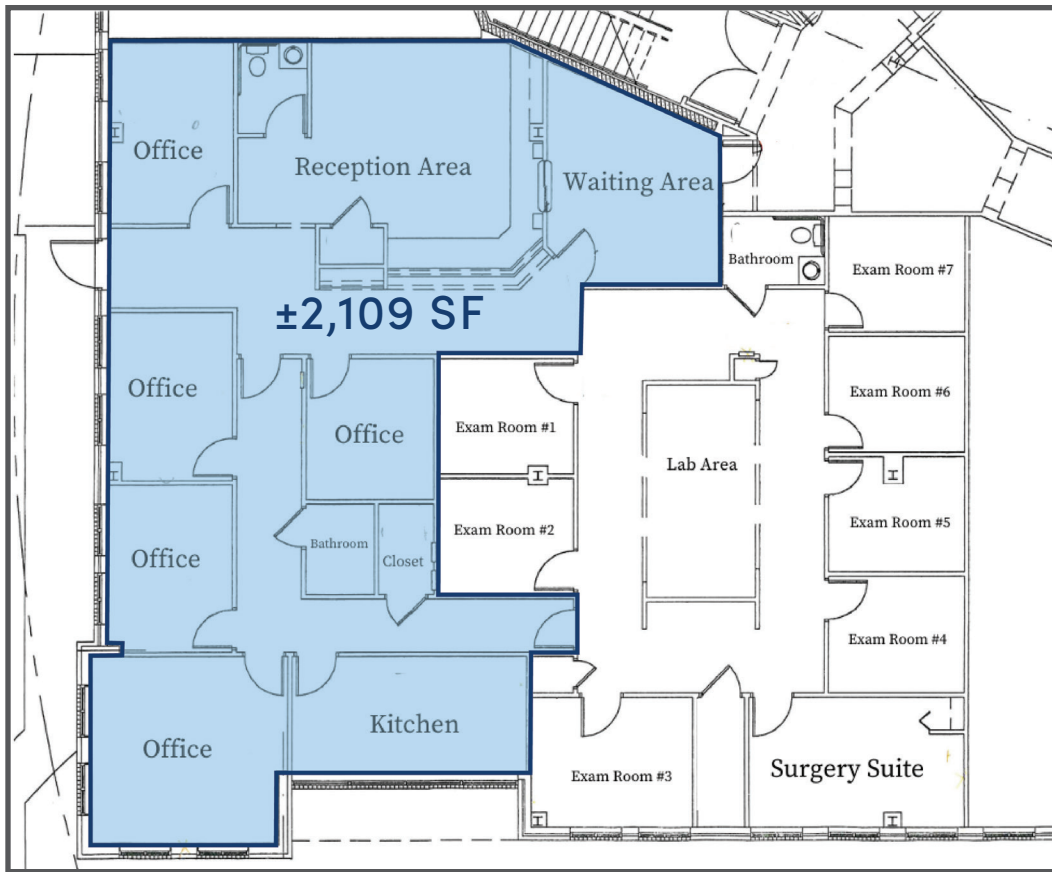
Electrical	Duke	Water	Municipal	Sewer	Municipal
-------------------	------	--------------	-----------	--------------	-----------

TAX INFORMATION

Zoning	GB-S	Tax Pin	6814-43-9780
---------------	------	----------------	--------------

PRICING & TERMS

Lease Rt/SF ±	\$17.50	Lease Type	NNN
----------------------	---------	-------------------	-----



LOCATION FEATURES

- Located in Winston-Salem's premier medical office parks of Brookview Hills, Highland Oaks, and Kimel Park
- Approximately 6 minutes (1.7 miles) to Novant Health Forsyth Medical Center
- Approximately 8 minutes (3.8 miles) to Atrium Health Wake Forest Baptist Medical Center
- Convenient access to I-40 (101,000 VPD) and Hanes Mall Boulevard (23,500 VPD)