



KEY FEATURES

- ±13,140 SF Industrial Property
- ± 2,280 SF of Office
- 1 - 15' x 11.5' Drive-In Door
- 20' Clear Height
- 2 Additional Parcels Included - 0.45 acres across the street

FLEX/INDUSTRIAL

FOR SALE | \$550,000

LEXINGTON FLEX WAREHOUSE

930 South Salisbury Street

Lexington, NC 27292

Great opportunity to purchase an Industrial Property just off Main Street in downtown Lexington. The building consists of ±13,140 SF with ±2,280 SF of 2-Level Office. The building has one (1) 15' x 11.5' Drive-In Door and 20' Clear Height. This Listing also includes 2 additional parcels across East 11th Avenue, totaling ±0.45 Acres.

LEARN MORE ABOUT THIS PROPERTY

JEFF ANDREWS, SIOR

Jeff@CommercialRealtyNC.com

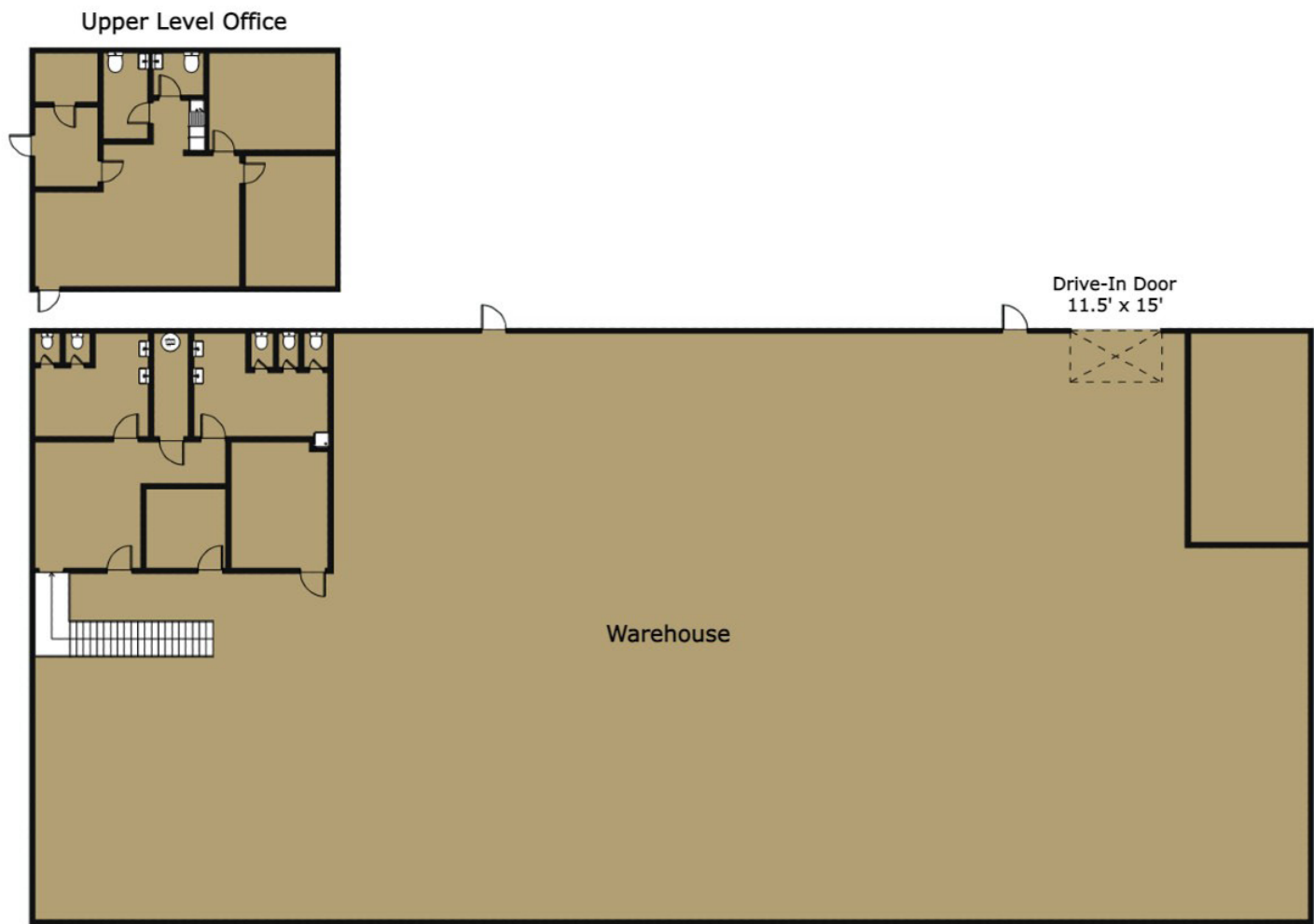
336.793.0890, ext 103

STEVE VALLOS

Steve@CommercialRealtyNC.com

336.793.0890, ext 105





LEXINGTON FLEX WAREHOUSE

LOCATION

Address	930 South Salisbury Street			
City	Lexington	Zip Code	27292	County Davidson

PROPERTY DETAILS

Property Type	Flex/Industrial	Restrooms ±	4	Ceiling Height ±	20'
Building SF ±	13,140	Office SF ±	2,280	Drive-Ins ±	1 - 15' x 11.5'

UTILITIES & ZONING

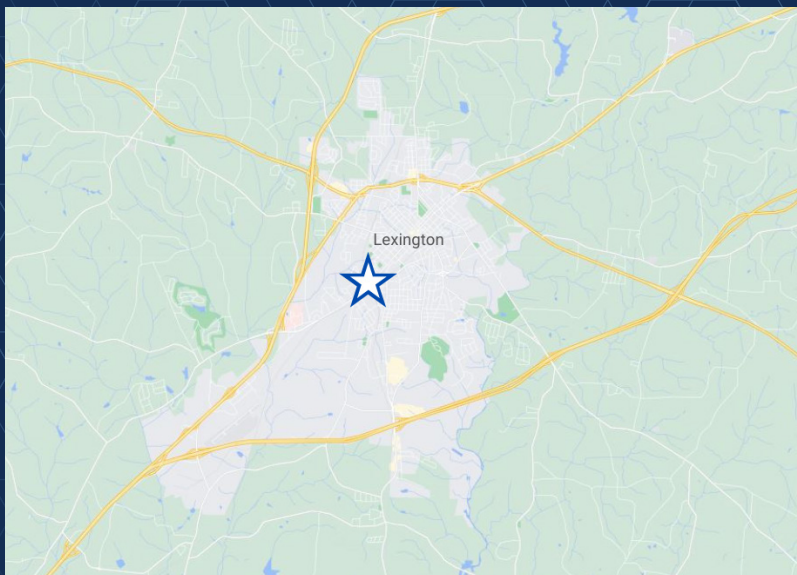
Electrical	3 Phase	Zoning	CC
-------------------	---------	---------------	----

PRICING & TERMS

Price	\$550,000		
--------------	-----------	--	--

FLEX/INDUSTRIAL

FOR SALE



LOCATION FEATURES

- Less than 2 miles from I-285
- Conveniently located off of Main Street, near downtown Lexington