

KEY FEATURES

- Beautifully landscaped grounds with irrigation and walking trail
- Ample parking – covered and surface lot
- 24/7 Security
- ±96,239 SF available
±19,248 SF per floor
- \$15.50 PSF Full Service

OFFICE

FOR LEASE

MADISON PARK V

5660 University Parkway
Winston Salem, NC 27105

Madison Park consists of 7 office buildings in a park like setting just minutes from Downtown Winston-Salem, with a beautifully landscaped grounds and walking trail.

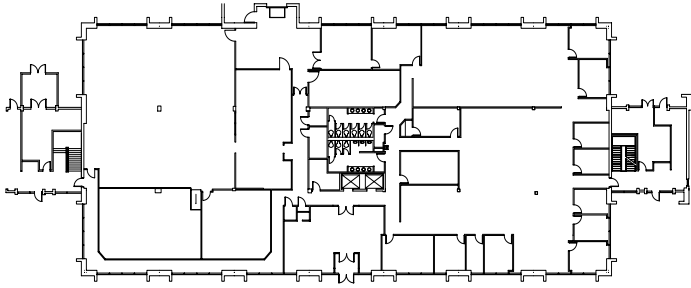
LEARN MORE ABOUT THIS PROPERTY

JEFF ANDREWS, SIOR

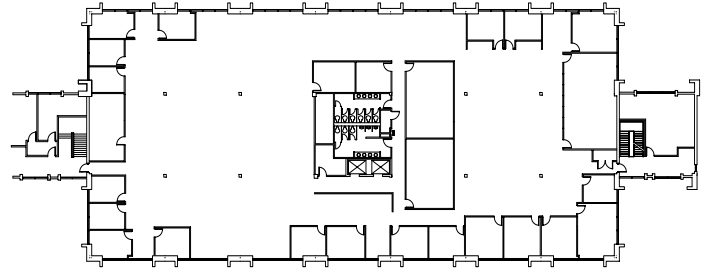
Jeff@CommercialRealtyNC.com

336.793.0890, ext 103

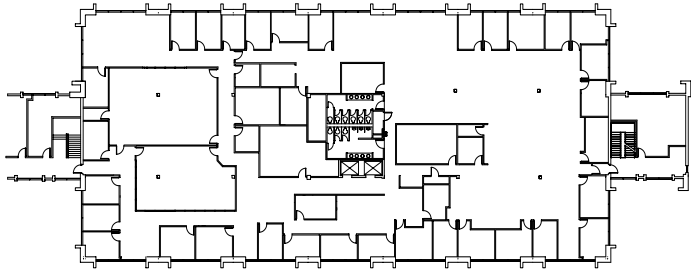




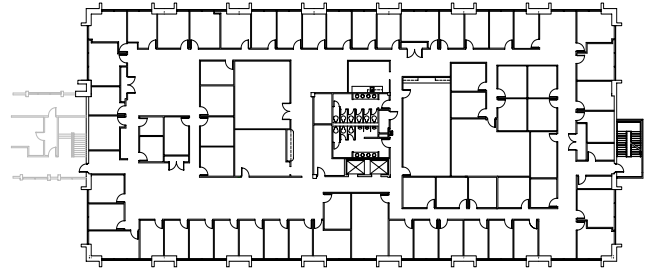
First Floor Plan | ±19,247 SF



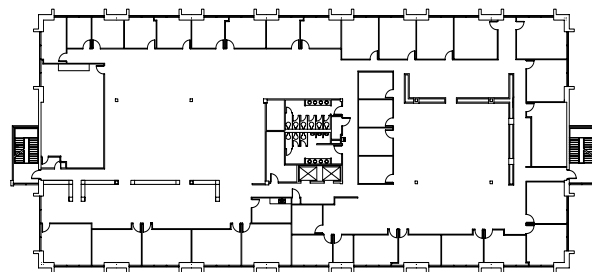
Second Floor Plan | ±19,248 SF



Third Floor Plan | ±19,248 SF



Fourth Floor Plan | ±19,248 SF

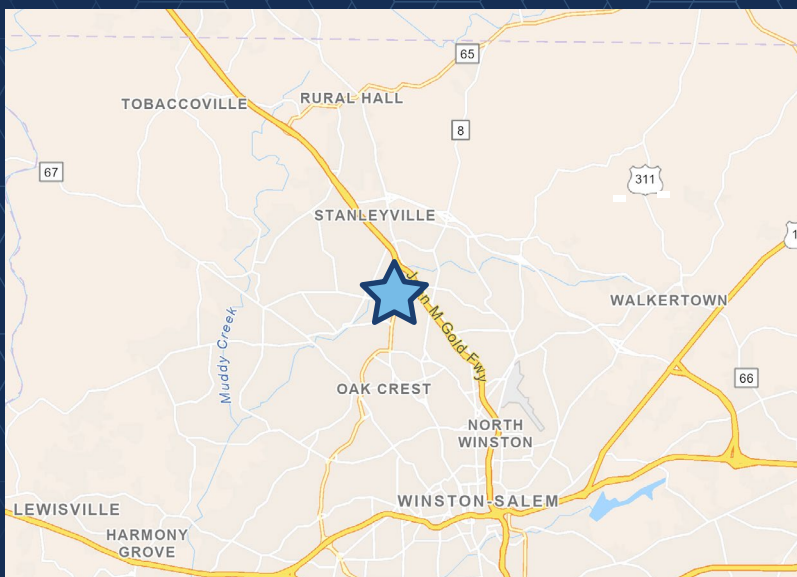


Fifth Floor Plan | ±19,248 SF



MADISON PARK V

LOCATION				
Address	5660 University Parkway			
City	Winston-Salem	Zip	27105	County Forsyth
PROPERTY DETAILS				
Property Type	Office	Building SF ±	96,239	Available SF ± Up to ±96,239
Floors	5	SF Per Floor ±	19,248	Acres ± 9.44
Year Built ±	1984	Building Exterior	Masonry	Elevator Yes
Sprinklered	First Floor Only	Ceiling Height ±	18'	Parking 5:1000
UTILITIES				
Electrical	Yes		Heat/Air	Yes
Water	Yes		Sewer	Yes
TAX INFORMATION				
Zoning	GB		Tax PIN	6828-35-1407
PRICING				
Lease Rate PSF	\$15.50		Lease Type	Full Service



LOCATION FEATURES

- Madison Park is just minutes from Downtown Winston-Salem
- Excellent access to US-52
- Ample nearby amenities including shopping, restaurants, and banking facilities