

KEY FEATURES

- ±17.75 Acres
- Zoning: AG
- Flat Topography
- Access on HWY 66
- Asking Price: \$1,526,600
- Forsyth County
- Adjacent ±23 AC Available
- Water & Sewer Adjacent to the Site

INDUSTRIAL DEVELOPMENT SITE | ±17.75 ACRES

FOR SALE



LEARN MORE ABOUT THIS PROPERTY

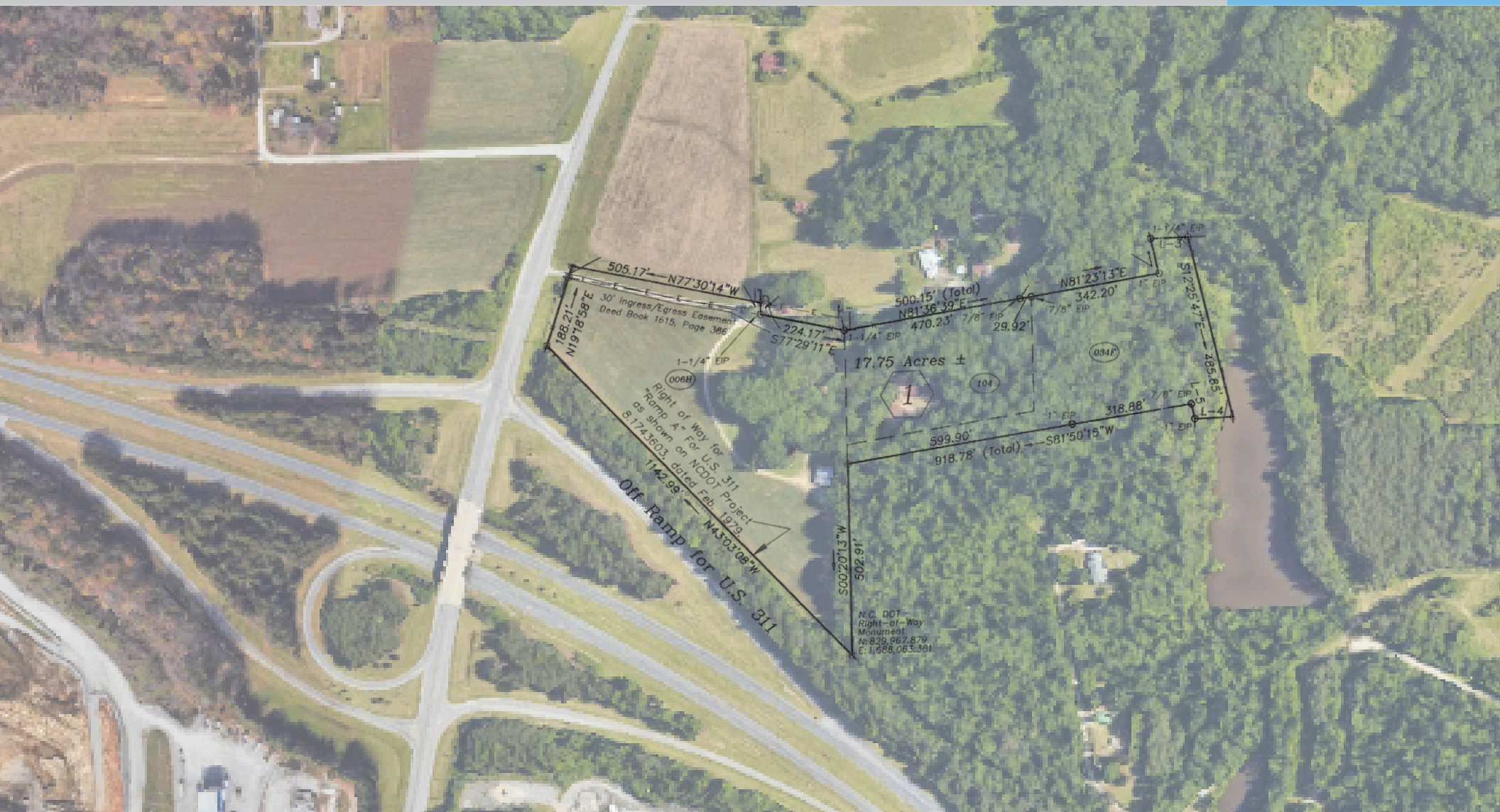
JORDAN REECE

jordan@commercialrealtync.com
336.793.0890, ext 209

STEVE VALLOS

steve@commercialrealtync.com
336.793.0890, ext 105

2823 NC 66 South
Kernersville, NC 27284



LEARN MORE ABOUT THIS PROPERTY

JORDAN REECE

jordan@commercialrealtync.com
336.793.0890, ext 209

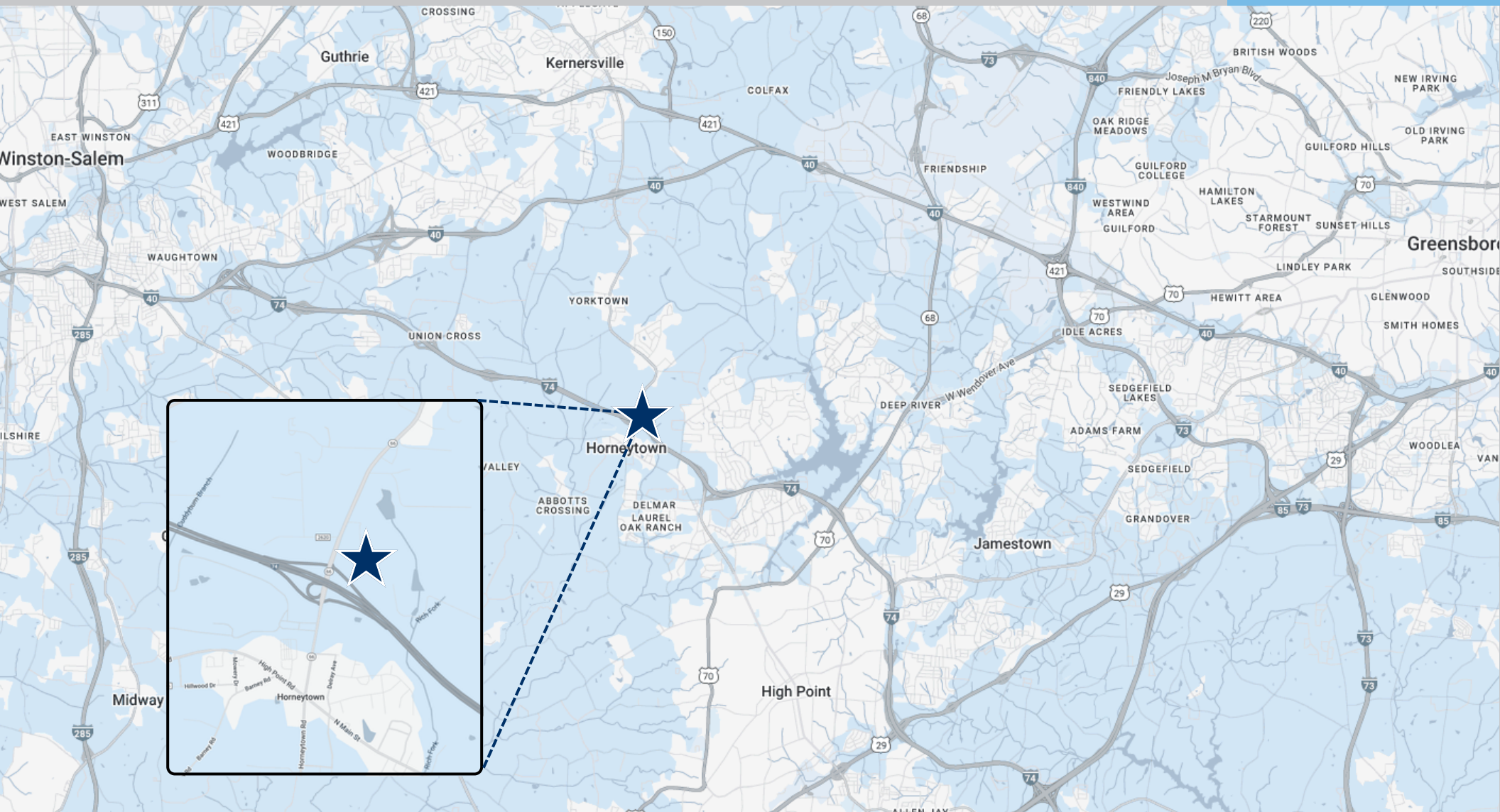
STEVE VALLOS

steve@commercialrealtync.com
336.793.0890, ext 105

2823 NC 66 South
Kernersville, NC 27284

INDUSTRIAL/RETAIL DEVELOPMENT SITE | ±17.75 ACRES

FOR SALE





2823 NC 66 South
Kernersville, NC 27284



CommercialRealtyNC.com

JORDAN REECE
jordan@commercialrealtync.com
336.793.0890, ext 209

STEVE VALLOS
steve@commercialrealtync.com
336.793.0890, ext 105